

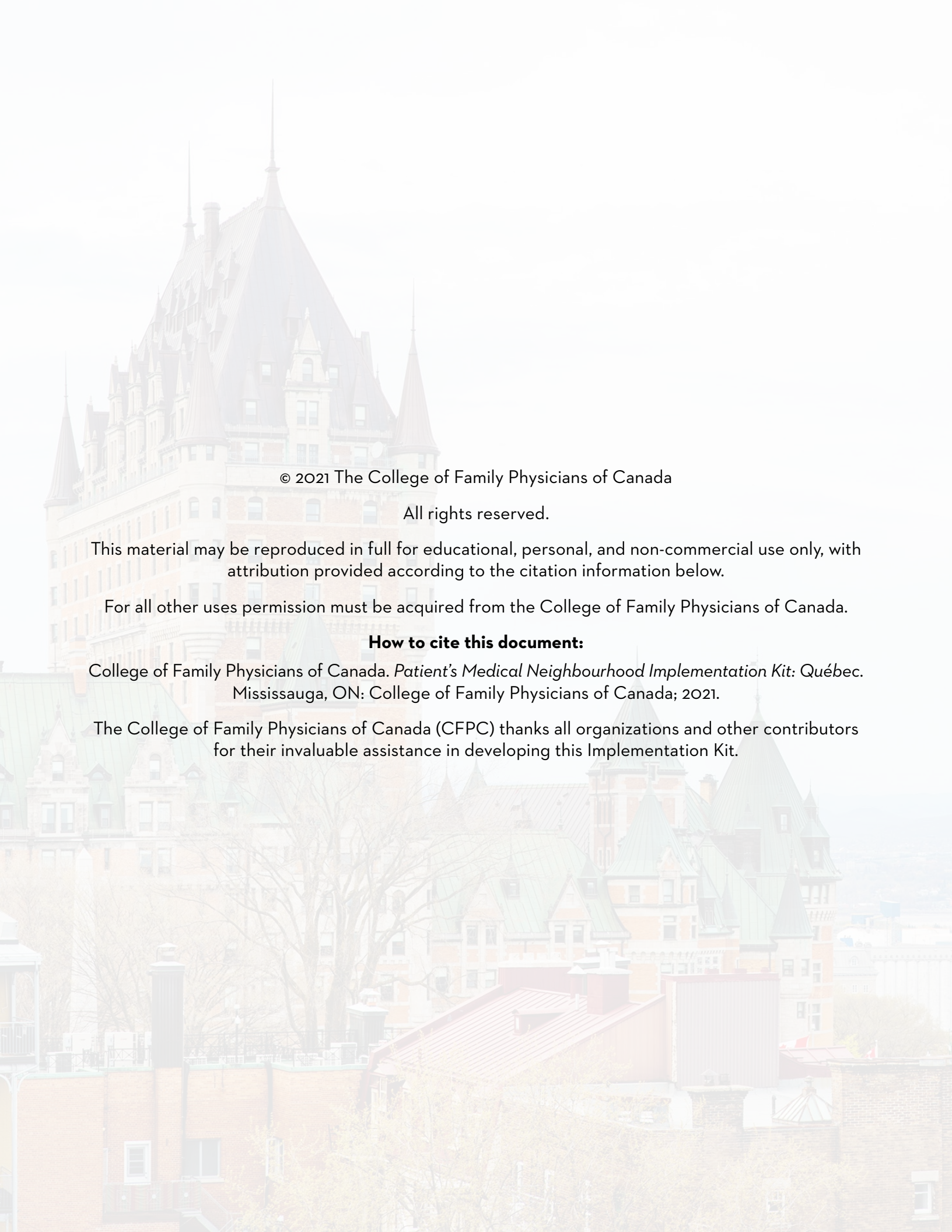


PATIENT'S MEDICAL NEIGHBOURHOOD

IMPLEMENTATION KIT

Québec College of Family Physicians





© 2021 The College of Family Physicians of Canada

All rights reserved.

This material may be reproduced in full for educational, personal, and non-commercial use only, with attribution provided according to the citation information below.

For all other uses permission must be acquired from the College of Family Physicians of Canada.

How to cite this document:

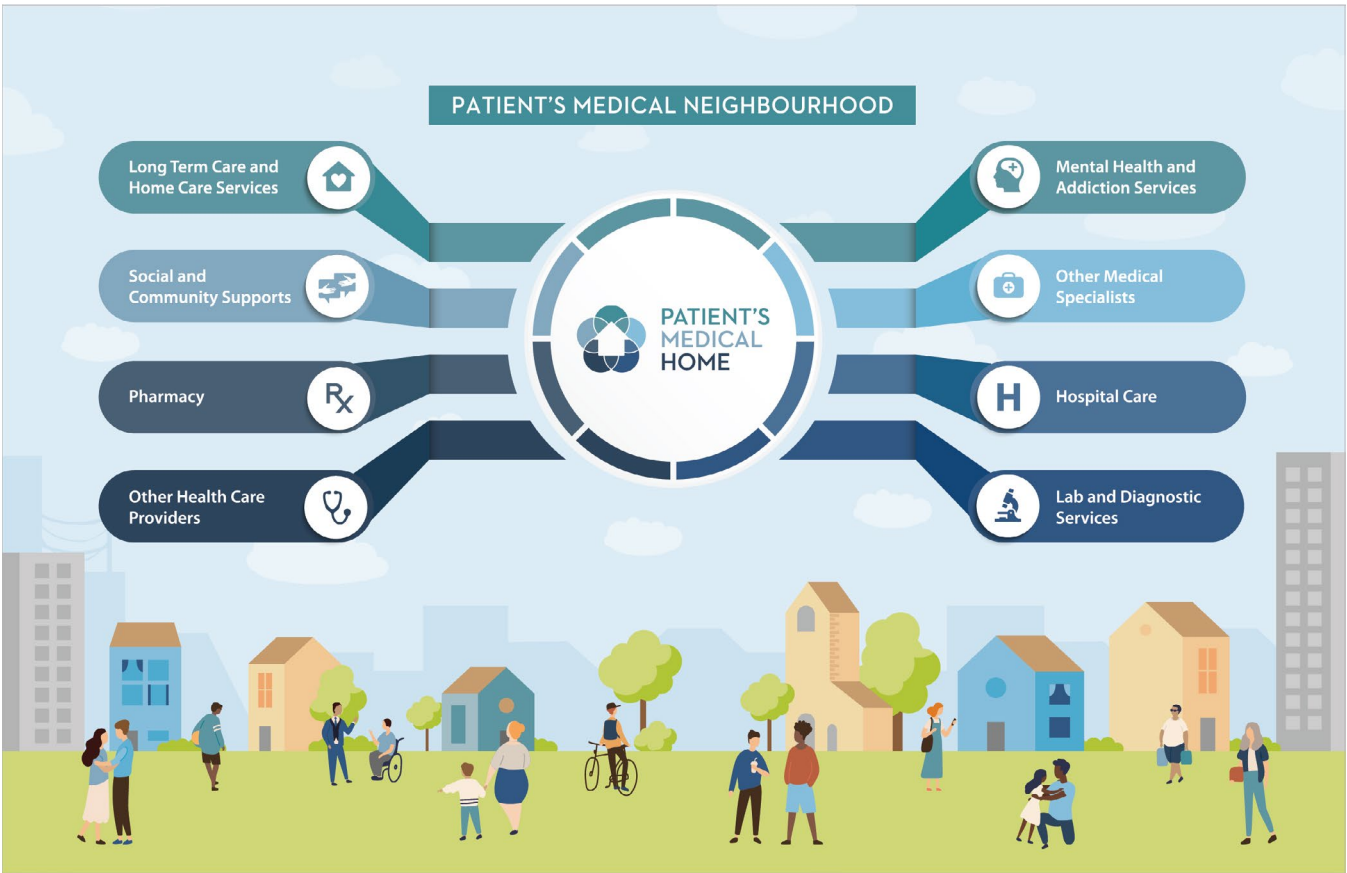
College of Family Physicians of Canada. *Patient's Medical Neighbourhood Implementation Kit: Québec*. Mississauga, ON: College of Family Physicians of Canada; 2021.

The College of Family Physicians of Canada (CFPC) thanks all organizations and other contributors for their invaluable assistance in developing this Implementation Kit.

The Patient's Medical Home (PMH) is the vision for the future of family practice in Canada put forward by the College of Family Physicians of Canada (CFPC).¹ The PMH emphasizes the role of the family practice and team-based care in providing high-quality, compassionate, and timely care. However, family practices are not the only settings involved in a patient's care.

The concept of the Patient's Medical Neighbourhood (Neighbourhood; Figure 1) takes this idea of team-based care in the PMH further to describe and reinforce a network of care involving multiple providers and services outside of the clinic.

Figure 1. The Patient's Medical Neighbourhood. The services shown here are not exhaustive but indicate the types of broad health services found in a Neighbourhood connected with a PMH.



Within this model, the PMH acts as a hub for coordinating care within the Neighbourhood. The Neighbourhood includes the many realms of health care outside of primary care, such as referrals to other medical specialists, health care providers, hospitals, long-term care, and home care structures or broader social and community supports such as community-based mental health and addictions supports and

other social services. In Québec, the development of family medicine groups (FMGs) will help practices in the province further align themselves with the PMH and Neighbourhood visions. Within these FMGs, social workers and nurse practitioners bring a wealth of support for the patient-centred approach and effectively facilitate collaboration with community resources in a given region.

This Implementation Kit has been collaboratively designed by the CFPC and the Québec College of Family Physicians, and is intended to complement the CFPC's Best Advice guide for the Patient's Medical Neighbourhood.² The kit is organized around a number of tangible actions you can take right now to further align your practice with the Neighbourhood vision, without relying on systemic change or more resources (e.g., financial, human resources):

- Get to know your patients' health care needs and preferences
- Connect your patients to community resources
- Build interprofessional relationships to provide more continuous care

- Leverage digital health and virtual care to enhance your practice

If you and your clinic team are implementing the Neighbourhood principles in your practice, the steps outlined in this kit will help. If you are just beginning to implement the more foundational PMH principles in your practice, you may wish to consult the steps outlined in the Patient's Medical Home Implementation Kit for Québec before consulting this kit.³

The following list of resources is not exhaustive. Resources are hosted by external organizations, and as such the accuracy and accessibility of their links are not guaranteed. You can find citation details—including document titles and website links—in the References section at the end of the document.

Get to know your patients' health care needs and preferences

Knowing the breakdown of your patient population (e.g., age, social determinants of health), what health concerns are most relevant to each patient group, their satisfaction with the level of care they receive, and what supports they need will help inform your practice organization. Particular attention should be paid to individuals with different needs or who experience challenges accessing care, such as people with disabilities, multiple comorbidities, and/or members of LGBTQ+, immigrant, or racialized communities.

Learn more about your patient panel and find opportunities to enhance your knowledge of your patients' health needs

1. Add and use screening tools to obtain more detailed information about your patients' health and access to services. Tools are available through the following organizations to enhance patient screening:
 - » *Poverty Tool for Québec Family Physicians*: A primary care tool for screening and supporting patients' living situation and socioeconomic concerns as part of their overall health⁴

- » Building on Existing Tools to Improve Chronic Disease Prevention and Screening in Primary Care (BETTER): Evidence-based recommendations for chronic disease prevention and screening including an algorithm for targets and care pathways adjusted for diabetic and non-diabetic patients⁵

2. Consult Your Health System, a set of interactive tools that allow users to view regional health indicator data from across the country, developed by the Canadian Institute for Health Information.⁶

Improve your ability to care for individuals who are members of LGBTQ+, immigrant, or racialized communities

3. Complete self-assessments to determine the extent to which you and your clinic provide culturally competent care:

- » Promoting Cultural and Linguistic Competency: A self-assessment checklist for primary care providers to assess the cultural competency of their physical office environment, communication skills, and attitudes⁷
- » Is Your Space Positive?: A self-assessment to help you make your organization more inclusive to people of all sexual orientations and gender identities⁸

4. Consult the fact sheet developed by the CFPC's Indigenous Health Committee to better understand the role that systemic racism can play in shaping an Indigenous patient's clinical experience, and what you can do better to help address this.⁹

5. Consult the Safer Places Toolkit, a comprehensive resource developed by Alberta Health Services that provides physicians and their staff with tips to increase awareness, encourage self-reflection, and build skills to create more welcoming and safer care for LGBTQ+ patients and their families.¹⁰

Learn more about your patients' care preferences and experiences

6. Use existing patient experience surveys to better understand where your practice can improve:

- » Health Quality Ontario's Patient Experience Survey and Support Guide^{11,12}
- » Saskatchewan Health Quality Council's primary health care survey¹³

7. Create an anonymous comment box for your waiting room and an anonymous form for your practice website, placed in locations that are easily found by your patients, and set up a process to regularly review what comes in.

Connect your patients to community resources

Connecting your patients to appropriate community resources can improve their overall health and well-being by addressing their social determinants of health. Understanding which community resources are available to your patients will help you tailor your approach to each patient's specific needs.

Learn more about the community resources available to you and your patients that can improve their overall health and well-being

1. Direct your patients to 211 services in the Capitale-Nationale and Chaudière-Appalaches regions or Greater Montreal. Both provide searchable databases containing information on social and community resources. These services are also available by telephone (dial 2-1-1).^{14,15}

Build in-house knowledge of available community resources

2. Create internal documents to keep track of community resources that you consider part of your Neighbourhood. The Health Commons Solutions Lab has developed tools to help you achieve this:
 - » Create an online database of community resources, and/or a Google map of community resources, using the Community Map Prototype and Database tool¹⁶
 - » Ask other service providers (i.e., your Neighbours) to confirm or complete details about their services using the Community Resource Cards tool¹⁷
3. For additional templates of internal documents for your Neighbourhood, consult the Appendix of the CFPC's Best Advice guide.²
4. Consider making certain members of your staff responsible for maintaining internal documents and contacts with other service providers in your Neighbourhood.

Build interprofessional relationships to provide more continuous care

Relationships between your clinic (i.e., the PMH) and other service providers (i.e., Neighbours) are the foundation of a successful Neighbourhood. Signing collaborative care agreements that clearly delineate Neighbours' responsibilities and expectations can help formalize these relationships and increase continuity of care by streamlining communication and referral processes.

Develop collaborative care agreements with other service providers in your Neighbourhood

1. Ask service providers to whom you regularly refer about how they view their relationship with your practice. Determine whether they would like to formalize their participation in the Neighbourhood.
2. Collaborative care agreements should be tailored appropriately to your practice, the service provider you are working with, and your patient population. Components of successful collaborative care agreements include:
 - » Specific details about what information is required to make an effective referral
 - » Referral platform(s) to use for communicating requests
 - » Expectations about communicating the urgency of a request
 - » Expectations for ensuring timely access to consultations and appointments, and sharing results
 - » What digital health functions are available and how they will be used to coordinate patient care
3. Use the following examples of interprofessional agreements as guides for building your own collaborative care agreements:
 - » Outline of each party's roles and responsibilities in managing patient care
 - » Sample Care Coordination Agreement: An example of a collaborative care agreement outlining the expectations of family physicians and specialist practices (Neighbours) developed by the American College of Physicians¹⁸
 - » Referral-Consultation Process: A guideline for standardizing referral processes developed by the College of Physicians and Surgeons of British Columbia.¹⁹ The guideline's appendices provide templates for referral requests and confirmations.
 - » Referral Agreement Between Practice A and Practice B: A modifiable referral agreement between a primary care practice and specialist practice developed by Accountable Health Partners²⁰

4. In instances where a collaborative care agreement is not being developed (e.g., if either party is uncomfortable with signing), focus on building and maintaining relationships. Tools from the Health Commons Solutions Lab can help you achieve this:
 - » Ask other service providers to confirm or complete details about their services using the Community Resource Cards tool or Provider Profile Cards tool^{17,21}

Leverage digital health and virtual care to enhance your practice

Digital health tools are invaluable resources for developing an effective Neighbourhood. Leveraging available tools can help you streamline communication and referral processes between you and your Neighbours, improve the management of your patient panel, make it easier to communicate with your patients, and improve your ability to conduct quality improvement initiatives within your practice.

Use digital health and telemedicine to improve referral and consultation processes with other service providers in your Neighbourhood

1. Register for eConsult Québec, a web-based platform allowing family physicians to submit non-urgent, patient-specific questions to specialists. eConsult will become the *conseil numérique* (CN), and the new service will launch in 2021 for a rollout across the province.²²

Use digital health tools to provide virtual care and communicate more effectively with your patients

2. Consult the Virtual Care Toolkit, a comprehensive tool kit developed by the Doctors of BC that provides detailed advice on topics such as virtual care workflows, available technologies, and patient communication.²³

3. Complete the Essentials to Getting Started with Virtual Care Checklist, a concise checklist of steps to follow before you engage in virtual care.²⁴
4. Consult the Accelerating Change Transformation Team (ACTT)'s electronic medical record (EMR) tip sheets for providing virtual care using select EMRs (Wolf, Med Access, Healthquest, Accuro, PS Suite).²⁵

Use digital health tools to start or improve management of your patient panel

5. The ACTT has developed multiple resources to aid in panel management:
 - » Panel Processes Change Package: A comprehensive tool kit for panel management that provides tools for identifying patients on the panel, maintaining panel processes, and optimizing care management of patients on the panel²⁶
 - » Panel Maintenance Tool: A tool to help clinics develop and assess their own processes for maintaining panel lists²⁷
6. Use the Health Commons Solutions Lab's Panel Management Tool to learn how to generate a patient list from three EMRs (Telus PS Suite, Accuro, and OSCAR).²⁸

Use digital health tools to conduct performance measurement and research projects in your practice

7. Consult the Patient's Medical Home Implementation Kit for Québec for advice about starting quality improvement projects that are manageable in scope and size for your practice.³
8. Consult the Réseau-1 Québec website, which contains information about multiple quality improvement resources from the university FMG (FMG-U) in Québec.^{29,30}

References

1. College of Family Physicians of Canada. *A new vision for Canada: Family Practice—The Patient's Medical Home* 2019. Mississauga, ON: College of Family Physicians of Canada; 2019. Available from: https://patientsmedicalhome.ca/files/uploads/PMH_VISION2019_ENG_WEB_2.pdf. Accessed December 1, 2020.
2. College of Family Physicians of Canada. *Best Advice guide: Patient's Medical Neighbourhood*. Mississauga, ON: College of Family Physicians of Canada; 2020. Available from: <https://patientsmedicalhome.ca/resources/best-advice-guides/the-patients-medical-neighbourhood/>. Accessed December 1, 2020.
3. Collège des médecins de famille du Canada. *Trousse de mise en œuvre du centre de médecine de famille: Québec*. Mississauga, ON: Collège des médecins de famille du Canada; 2019. Dans: https://patientsmedicalhome.ca/files/uploads/PMH2019_ImplementKit_QC_FRE.pdf. Accessed December 1, 2020.
4. Centre for Effective Practice. *La pauvreté outil pour les médecins de famille du Québec*. Toronto, ON: Centre for Effective Practice; 2016. Available from: https://portal.cfpc.ca/ResourcesDocs/UploadedFiles/CPD/_PDFs/CQMF-Outil_Pauvrete_Final.pdf. Accessed December 1, 2020.
5. BETTER. The BETTER Program website. 2015. <http://www.better-program.ca/home>. Accessed December 1, 2020.
6. Canadian Institute for Health Information. Your Health System website. 2019. https://yourhealthsystem.cihi.ca/hsp/?lang=en&_ga=2.19268538.366093388.1583512489-596764714.1583512489. Accessed December 1, 2020.
7. Georgetown University National Center for Cultural Competence. *Promoting Cultural and Linguistic Competency: Self-assessment checklist for personnel providing primary health care services*. Washington, DC: Georgetown University National Center for Cultural Competence; 2009. Available from: <https://nccc.georgetown.edu/documents/Checklist%20PHC.pdf>. Accessed December 1, 2020.
8. Hamilton Family Health Team. *Is Your Space Positive?* Hamilton, ON: Hamilton Family Health Team; 2015. Available from: <https://docs.hamiltonfht.ca/dsweb/Get/Document-2926>. Accessed December 1, 2020.
9. College of Family Physicians of Canada. *Health and Health Care Implications of Systemic Racism on Indigenous Peoples in Canada*. Mississauga, ON: College of Family Physicians of Canada; 2016. Available from: https://portal.cfpc.ca/ResourcesDocs/uploadedFiles/Resources/_PDFs/SystemicRacism_ENG.pdf. Accessed December 1, 2020.
10. Alberta Health Services. *Sexual Orientation, Gender Identity & Gender Expression (SOGIE): Safer Places Toolkit*. Edmonton, AB: Alberta Health Services; 2019. Available from: <https://www.albertahealthservices.ca/assets/info/pf/div/if-pf-div-sogie-safer-places-toolkit.pdf>. Accessed December 1, 2020.

11. Health Quality Ontario. *Primary Care Patient Experience Survey*. Toronto, ON: Health Quality Ontario; 2015. Available from: <https://www.hqontario.ca/Portals/O/documents/qi/primary-care/primary-care-patient-experience-survey-en.pdf>. Accessed December 1, 2020.
12. Health Quality Ontario. *Primary Care Patient Experience Survey: Support Guide*. Toronto, ON: Health Quality Ontario; 2015. Available from: <http://www.hqontario.ca/Portals/O/documents/qi/primary-care/primary-care-patient-experience-survey-support-guide-en.pdf>. Accessed December 1, 2020.
13. Saskatchewan Health Quality Council. Health System Performance: Measuring the patient experience website. 2020. <https://hqc.sk.ca/health-system-performance/measuring-the-patient-experience>. Accessed December 1, 2020.
14. 211 Québec Regions. 211 Québec Regions website. 2020. <http://www.211quebecregions.ca/>. Accessed December 1, 2020.
15. 211 Grand Montréal. 211 Grand Montréal website. 2020. <https://www.211qc.ca/>. Accessed December 1, 2020.
16. Health Commons Solutions Lab. *Community Map Prototype and Database*. Toronto, ON: Health Commons; 2020. Available from: <https://www.healthcommons.ca/s/CommunityMapPrototypeTool-j8dz.pptx>. Accessed December 1, 2020.
17. Health Commons Solutions Lab. *Tool: Community Resource Cards*. Toronto, ON: Health Commons; 2020. Available from: <https://www.healthcommons.ca/s/CommunityResourceCardsTool-hccj.pptx>. Accessed December 1, 2020.
18. American College of Physicians. *Sample Care Coordination Agreement Referrals, Consults, Co-management General: for all patients*. Philadelphia, PA: American College of Physicians; 2014. Available from: https://www.acponline.org/system/files/documents/clinical_information/high_value_care/clinician_resources/hvcc_toolkit/hvcc_project/sample-care-coordination-agreement.pdf. Accessed December 1, 2020.
19. College of Physicians and Surgeons of British Columbia. *Professional Guideline - Referral-Consultation Process*. Victoria, BC: College of Physicians and Surgeons of British Columbia; 2020. Available from: <https://www.cpsbc.ca/files/pdf/PSG-Referral-Consultation-Process.pdf>. Accessed December 1, 2020.
20. Accountable Health Partners. *Referral Agreement between Practice A and Practice B*. Rochester, NY: Accountable Health Partners; 2017. Available from: <https://ahpnetwork.com/wp-content/uploads/2017/06/Referral-Agreement-Template.pdf>. Accessed December 1, 2020.
21. Health Commons Solutions Lab. *Tool: Provider Profile Cards*. Toronto, ON: Health Commons; 2020. Available from: <https://www.healthcommons.ca/s/ProviderProfileCardsTool-b3lw.pptx>. Accessed December 1, 2020.

22. eConsult Québec. eConsult Québec website. 2020. <http://econsultquebec.ca/>. Accessed December 1, 2020.
23. Doctors of BC. *Virtual Care – Toolkit*. Vancouver, BC: Doctors Technology Office; 2020. Available from: https://www.doctorsofbc.ca/sites/default/files/dto_virtual_care_toolkit.pdf. Accessed December 1, 2020.
24. Alberta Medical Association. *The Essentials to Getting Started with Virtual Care Checklist*. Edmonton, AB: Alberta Medical Association. Available from: <https://www.albertadoctors.org/e-health/essentials-getting-started-checklist.pdf>. Accessed December 1, 2020.
25. Health Commons Solutions Lab. *TOOL – Panel Management: Steps to Pull a List of Patients*. Toronto, ON: Health Commons; 2020. Available from: <https://www.healthcommons.ca/s/PanelManagementTool.pptx>. Accessed December 1, 2020.
26. Accelerating Change Transformation Team. *Panel Processes*. Edmonton, AB: Accelerating Change Transformation Team. Available from: <https://actt.albertadoctors.org/file/panel-process-change-package.pdf>. Accessed December 1, 2020.
27. Accelerating Change Transformation Team. *Panel Maintenance Tool*. Edmonton, AB: Accelerating Change Transformation Team. Available from: <https://actt.albertadoctors.org/file/panel-maintenance-tool.pdf>. Accessed December 1, 2020.
28. Health Commons Solutions Lab. *TOOL – Panel Management: Steps to Pull a List of Patients*. Toronto, ON: Health Commons; 2020. Available from: <https://www.healthcommons.ca/s/PanelManagementTool.pptx>. Accessed December 1, 2020.
29. Réseau-1 Québec. Réseau-1 Québec website. 2020. <https://reseau1quebec.ca/>. Accessed December 1, 2020.
30. Réseau-1 Québec. *Amélioration continue de la qualité* website. 2020. <https://reseau1quebec.ca/recherche-et-ressources/amelioration-continue-de-la-qualite/>. Accessed December 1, 2020.